

# PHOTO EPHEMERIS



One of the world's best-known planning tools for outdoor photography

Free web app now comes with comprehensive support for **solar eclipse** planning

A screenshot of the Photo Ephemeris website homepage. The background is a sunset over a beach with waves. The website has a dark header with the logo, navigation links (Sign in, Sign up, UPGRADE, en), and a 'START TOUR' button. The main content area features three text boxes: 'One of the most useful apps for any nature photographer.' with the 'Outdoor Photographer' logo; 'Head and shoulders above the crowd is The Photographer's Ephemeris. Odd name, great app.' with the 'NATIONAL GEOGRAPHIC' logo; and 'The Photographer's Ephemeris helps you plan outdoor photography shoots in natural light. It's a map-based sun and moon calculator.' Below this is a call to action: 'See how the light will fall on the land, day or night, for any location on earth.' and 'The web app is free to use\*. Get started today.' with a 'START PLANNING NOW' button. A footer contains social media icons, version information (3.8.0), and copyright (© 2010-2023 Crockneck Consulting LLC).

PHOTO EPHEMERIS

Sign in | Sign up UPGRADE en

START TOUR MAP 3D LOCATIONS SETTINGS

One of the most useful apps for any nature photographer.

Outdoor Photographer.

Head and shoulders above the crowd is The Photographer's Ephemeris. Odd name, great app.

NATIONAL GEOGRAPHIC

The Photographer's Ephemeris helps you plan outdoor photography shoots in natural light. It's a map-based sun and moon calculator.

See how the light will fall on the land, day or night, for any location on earth.

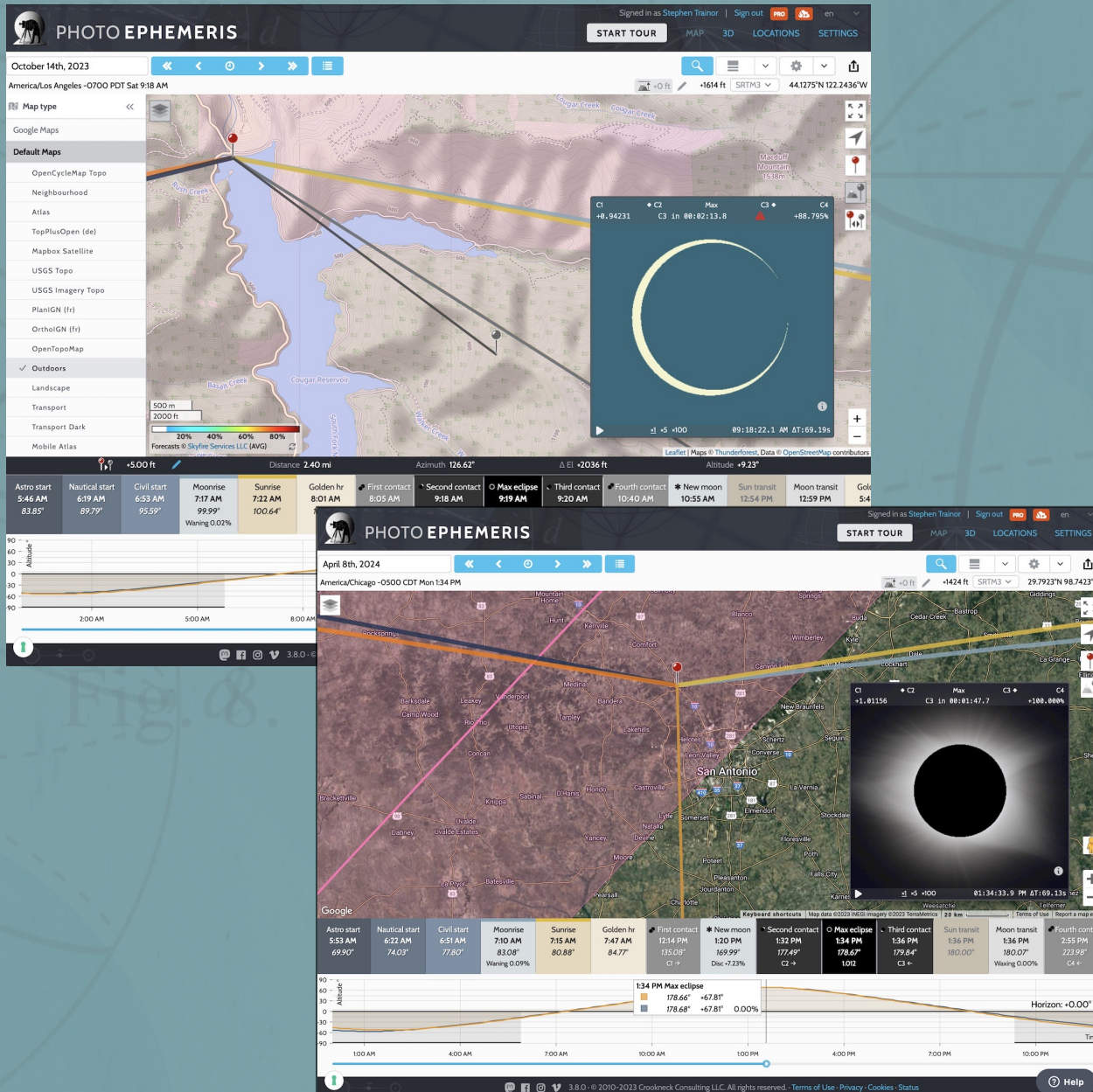
The web app is free to use\*. Get started today.

START PLANNING NOW ▶

\* Optional PRO plan available

3.8.0 · © 2010-2023 Crockneck Consulting LLC. All rights reserved. · Terms of Use · Privacy · Cookies · Status

# Solar eclipse tools

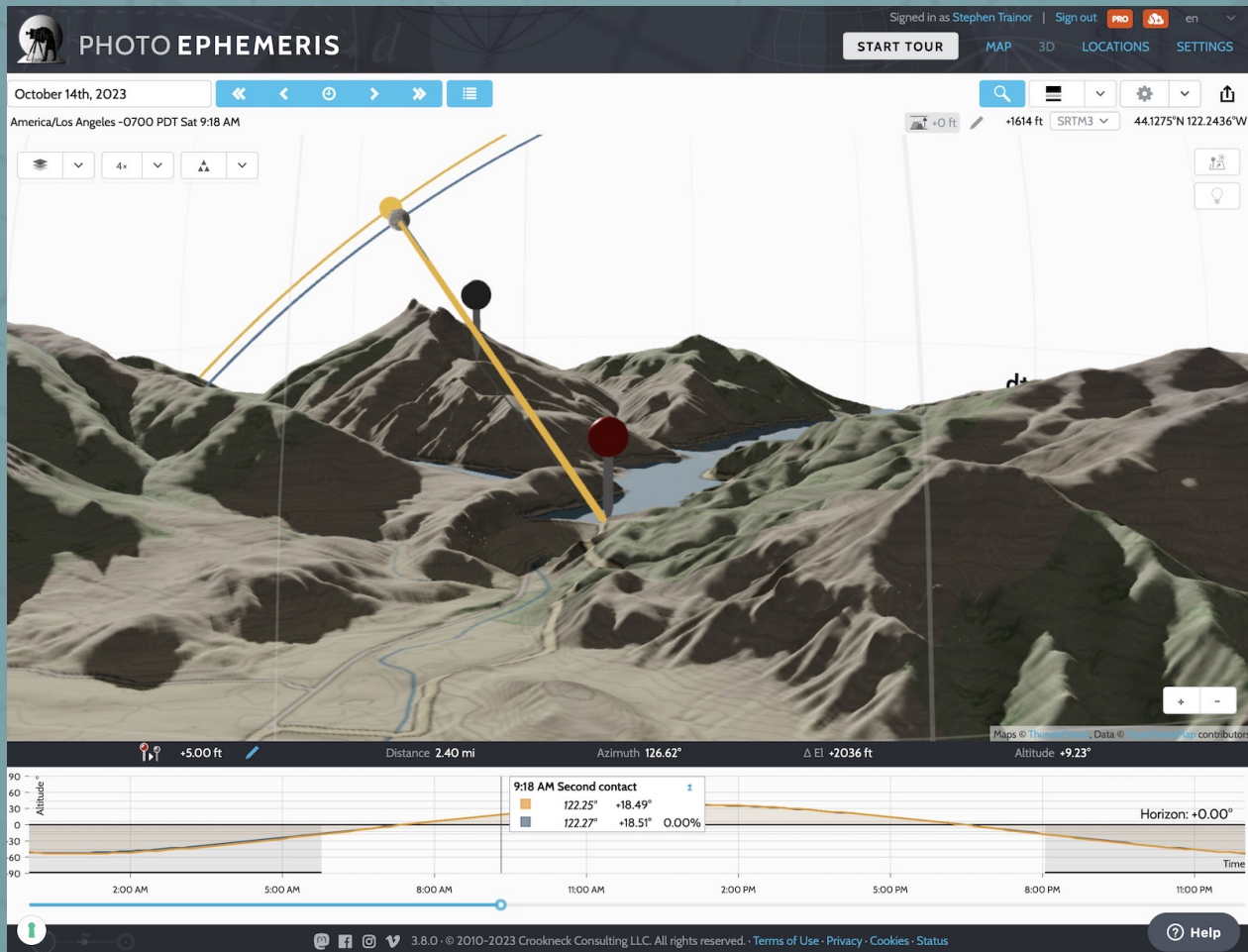


- Free web app runs in the browser
- Sun, Moon position and direction shown clearly
- Multiple map styles (street, topographic, satellite)
- Distance and elevation measurements
- Eclipse timings (local circumstances)
- Eclipse path
- Eclipse simulator

Quickly evaluate different potential locations simply by moving the map pin.

- [Tutorials](#)
- [Solar Eclipse Planning](#)

# 3D Terrain Visualization

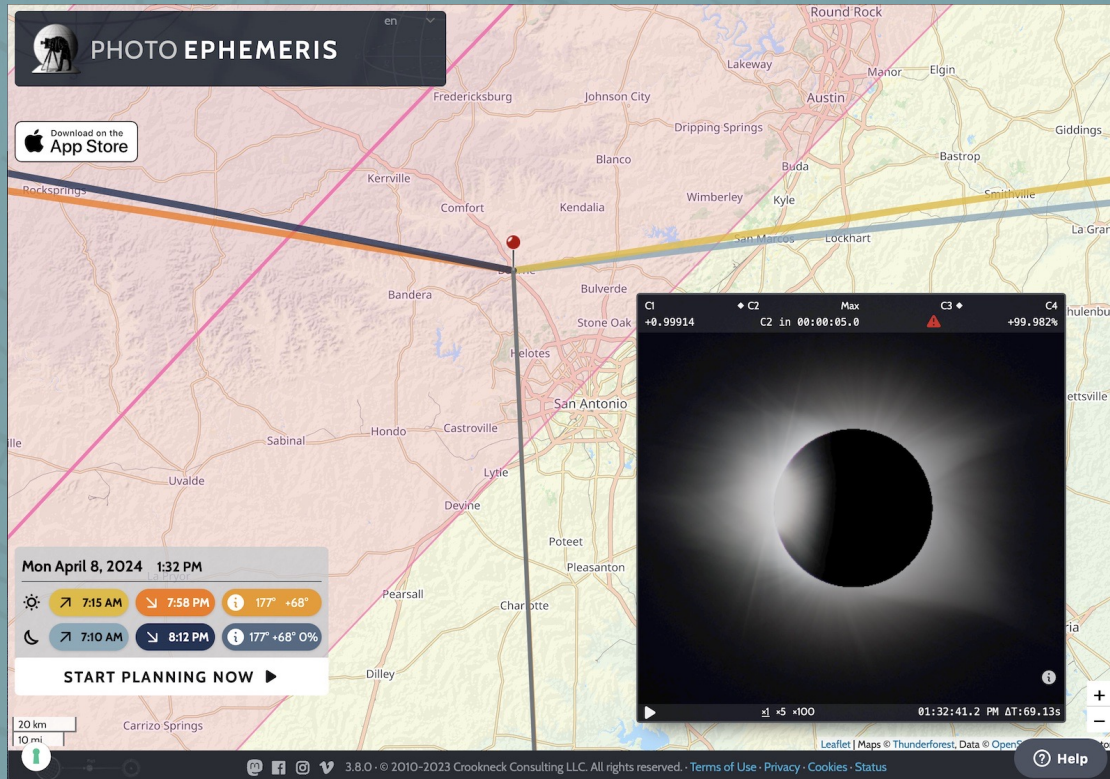


- PRO plan includes 3D terrain visualization
- Check sightlines from shooting location to the Sun/Moon
- Sun and Moon paths visualized

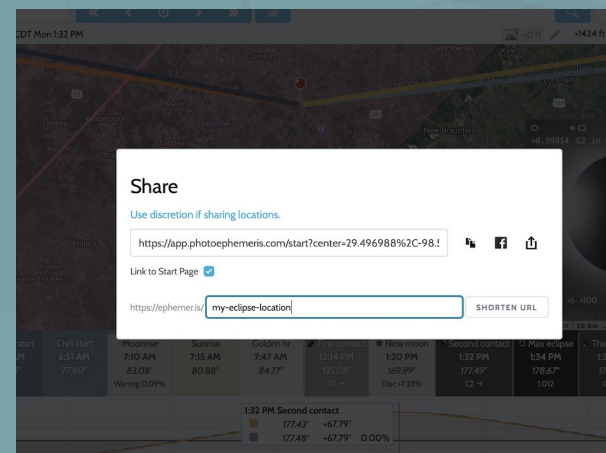
**Ensure your eclipse shot is not obscured by surrounding terrain!**

- [3D Terrain](#)

# Shareable Links



- Create easily shareable links to any date/time/location, including eclipses
- Custom short links available, e.g. [ephemeris.is/my-eclipse-location](https://ephemeris.is/my-eclipse-location)
- Simple, user-friendly landing page for first-time visitors



Share links to locations of interest to your audience

# Contact

PHOTO  
EPHEMERIS



See how the light will fall on the land, day or night, for any location on Earth

[photoephemeris.com](http://photoephemeris.com)

[support@photoephemeris.com](mailto:support@photoephemeris.com)

Affiliate program available ([link](#))

Discount codes available for your organization, photo club, etc.

## Contact

Stephen Trainor, Crookneck Consulting LLC  
[stephen@crookneckconsulting.com](mailto:stephen@crookneckconsulting.com)

[app.photoephemeris.com](http://app.photoephemeris.com)

