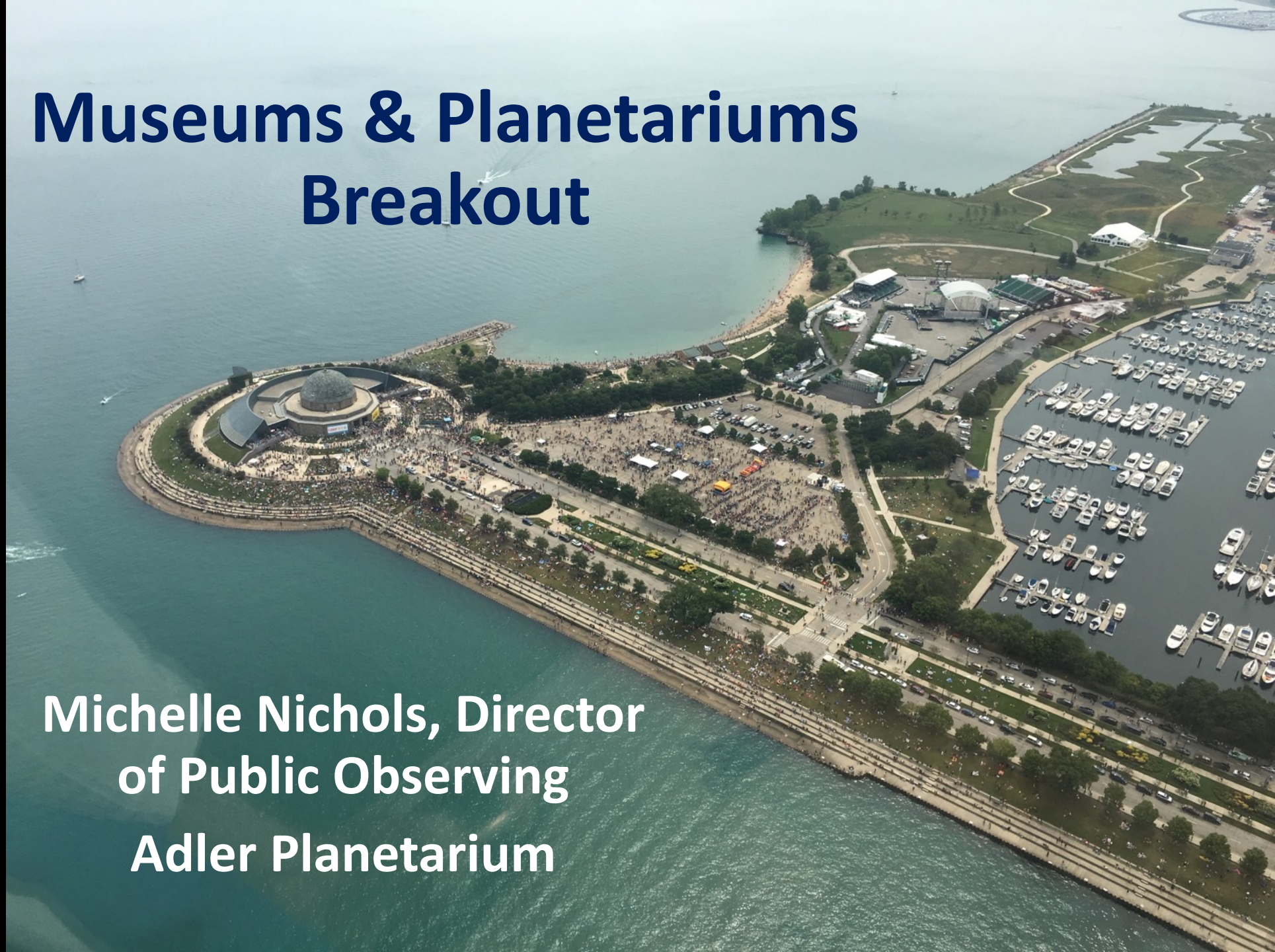


# Museums & Planetariums Breakout

Michelle Nichols, Director  
of Public Observing  
Adler Planetarium



## What worked well for museums/planetariums in 2017:

- Creating/utilizing freely-available eclipse animations
- Getting the teacher community ready
- Creating/utilizing Spanish-language content
- Utilizing the AAS solar glasses tested/passed list & directing the public & the media there

## What do we need to do well (or better) in 2023/2024:

- Getting school administrators ready for the eclipses
- Providing clear instructions to the public re: wearing solar glasses during partial eclipse & not wearing glasses during totality
- Explaining to the public how to view the eclipse if you don't have solar viewing glasses
- Emphasizing solar glasses sharing
- Providing clear expectations re: the difference between the Oct annular eclipse & the Apr total eclipse

What else worked well for you in 2017?

What else do you want to do better for 2023/2024?

What are you working on now?

Michelle Nichols, Director of Public Observing  
Adler Planetarium, Chicago, IL  
[mnichols@adlerplanetarium.org](mailto:mnichols@adlerplanetarium.org)