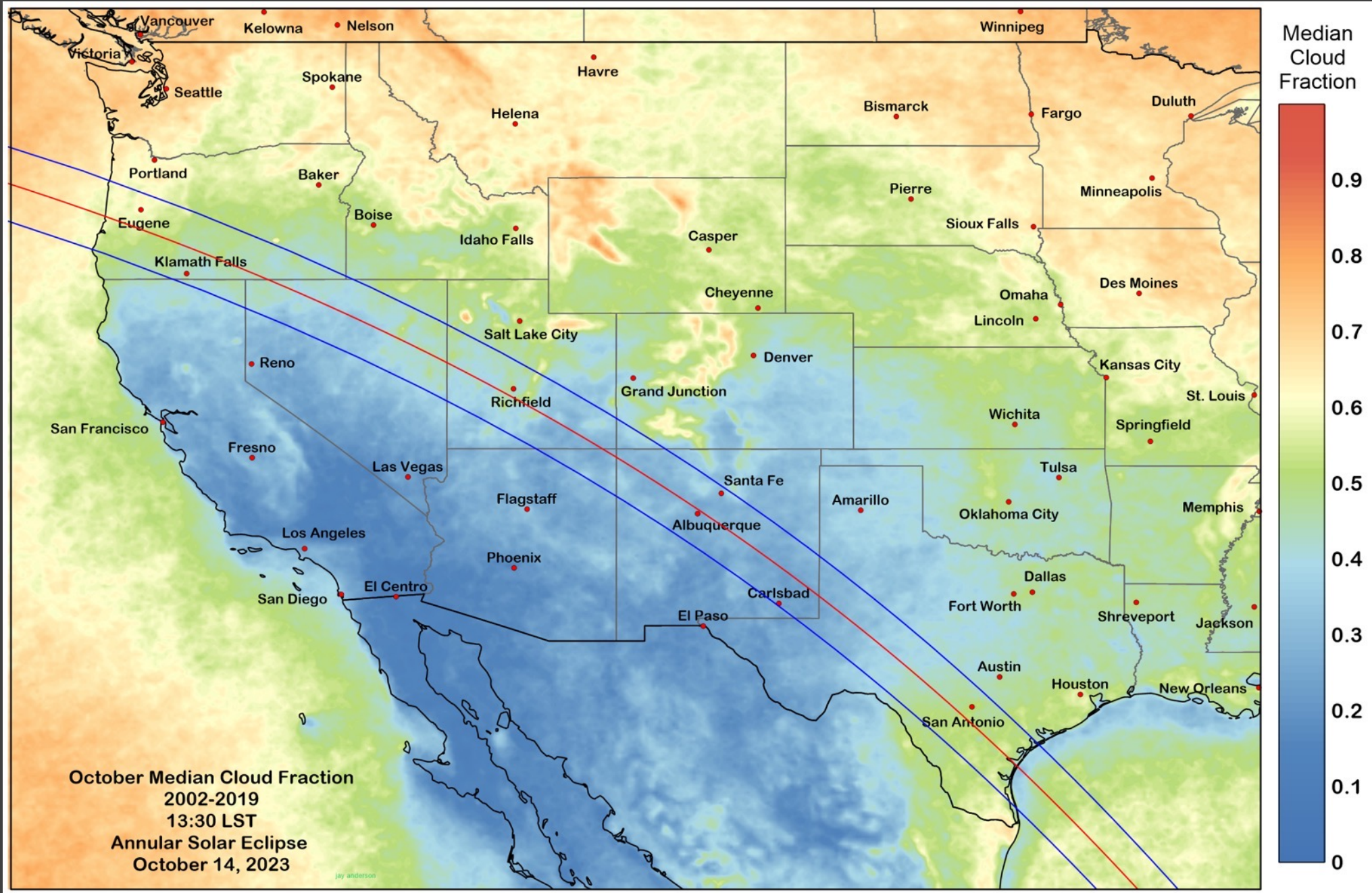
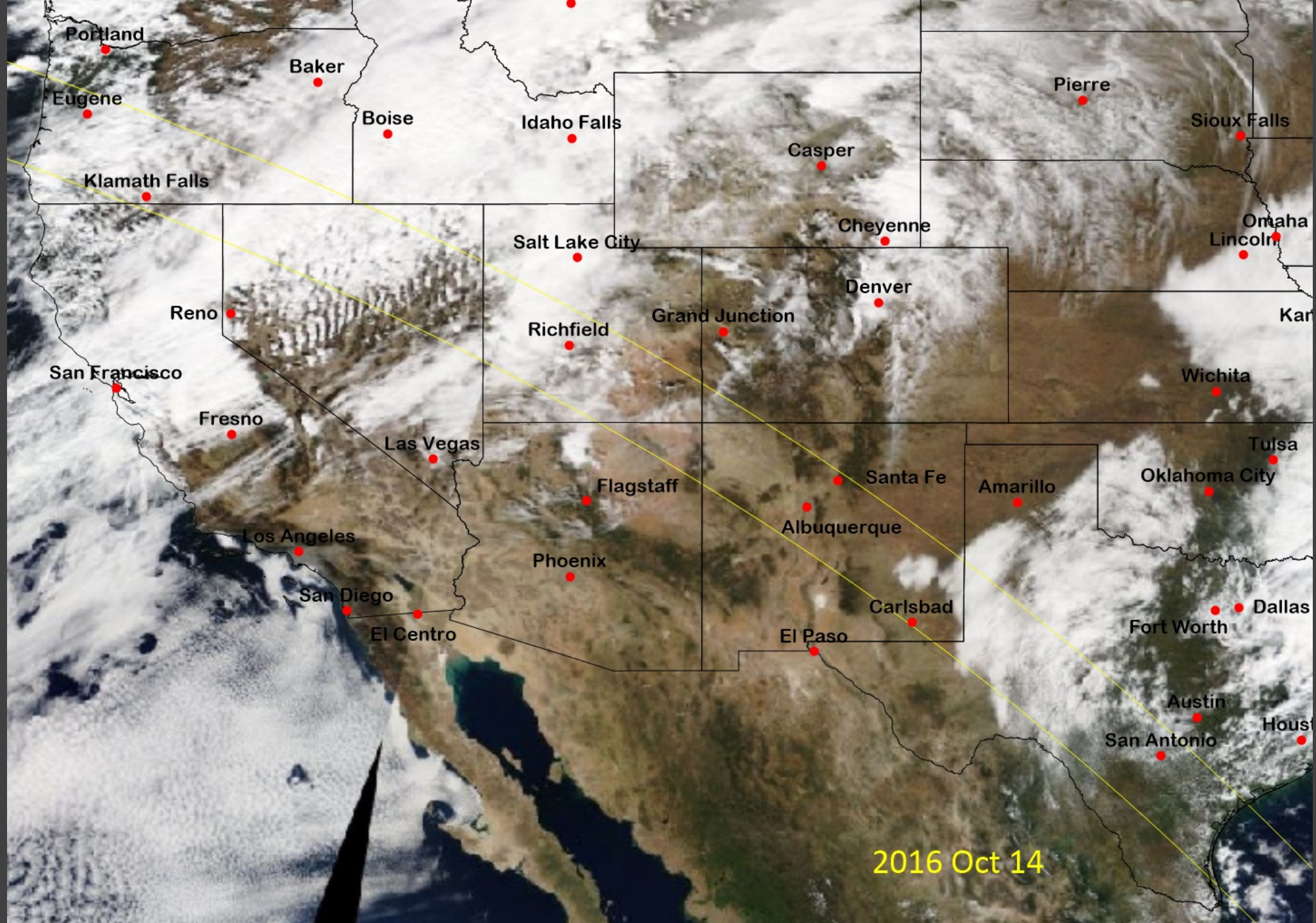


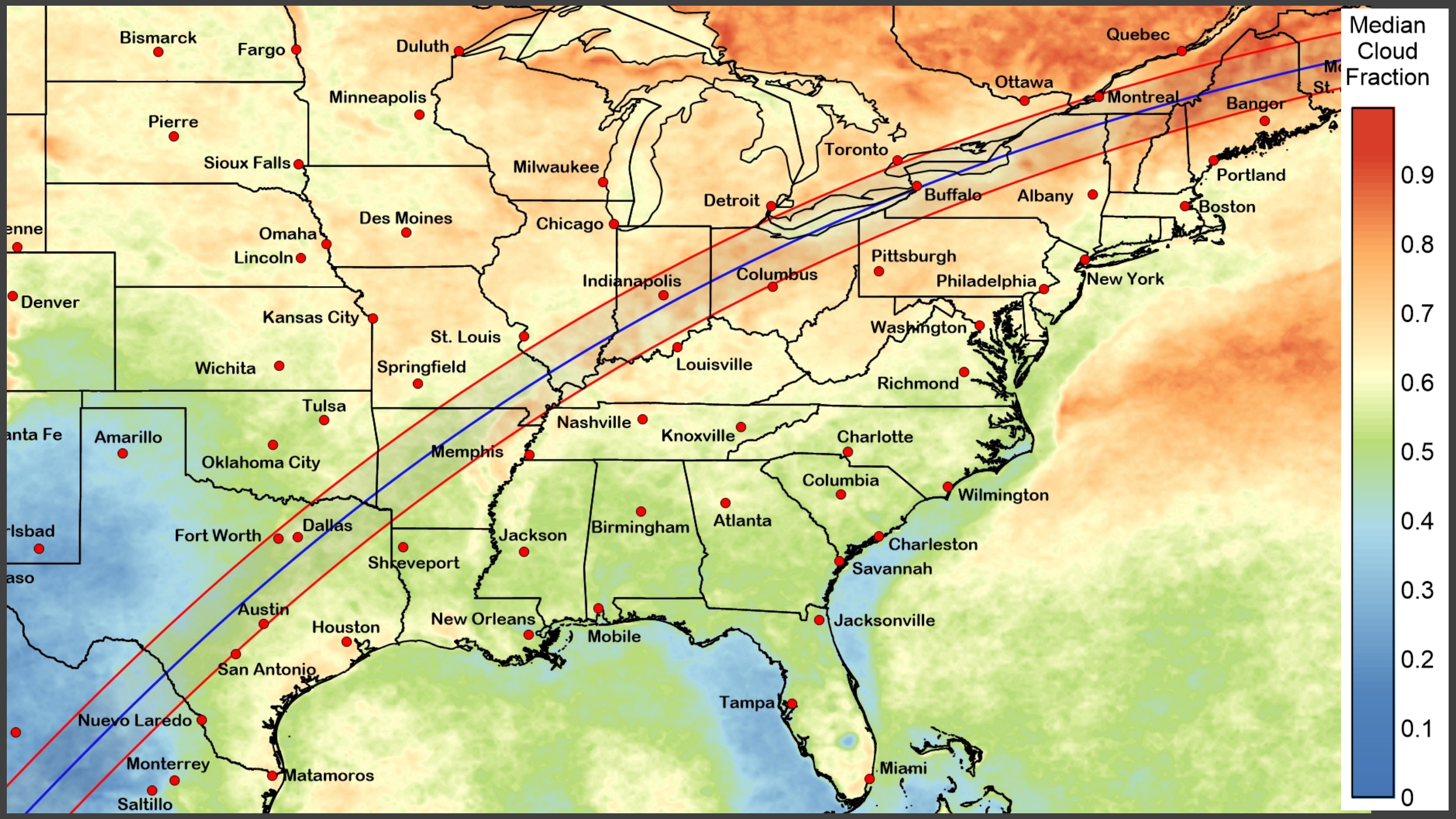
Some thoughts on planning for the weather ahead of the eclipse

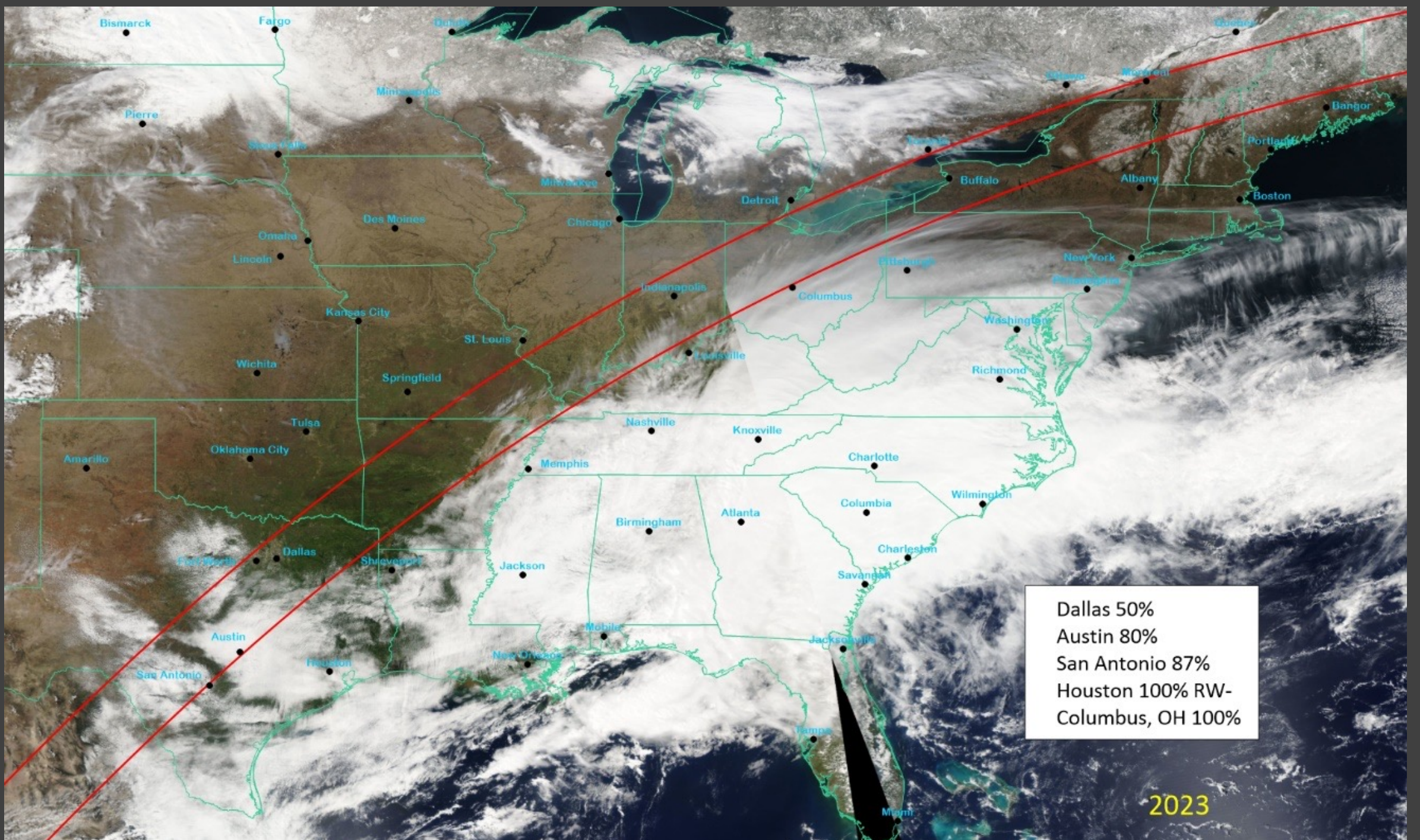


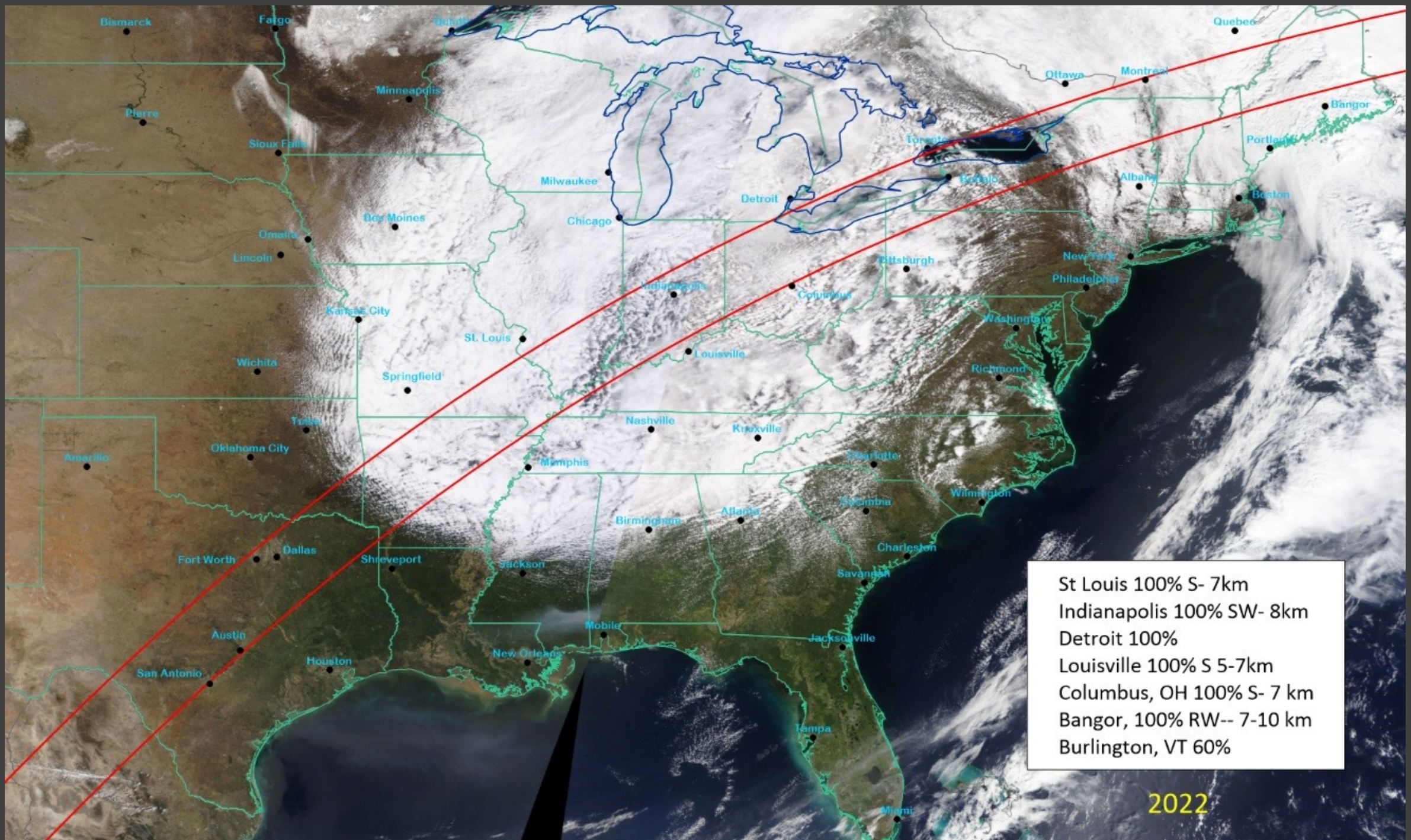




2016 Oct 14

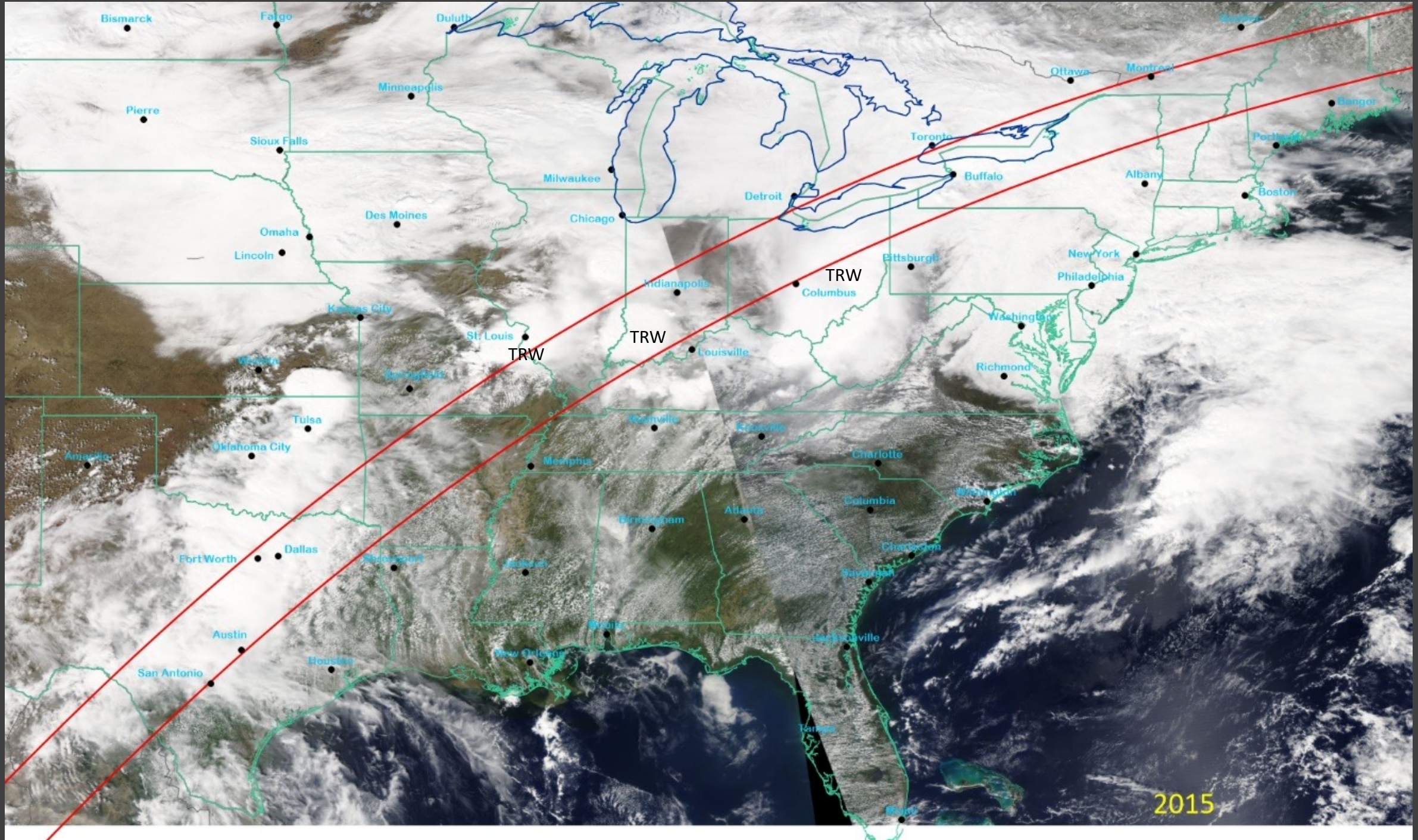




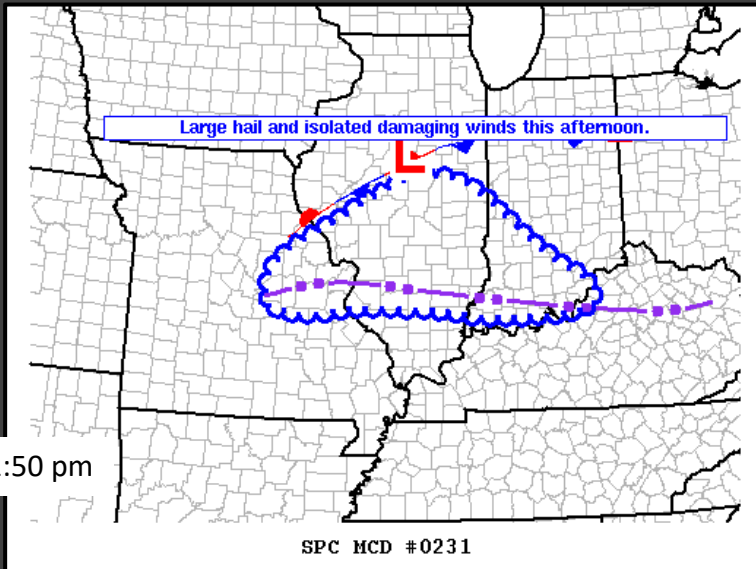
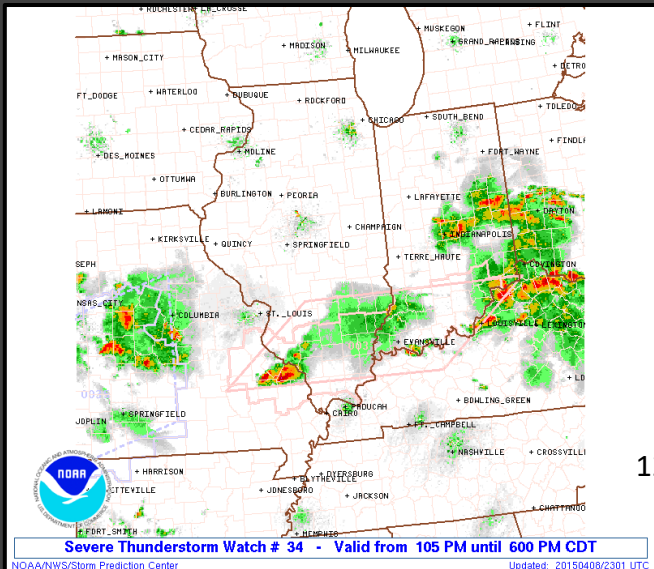
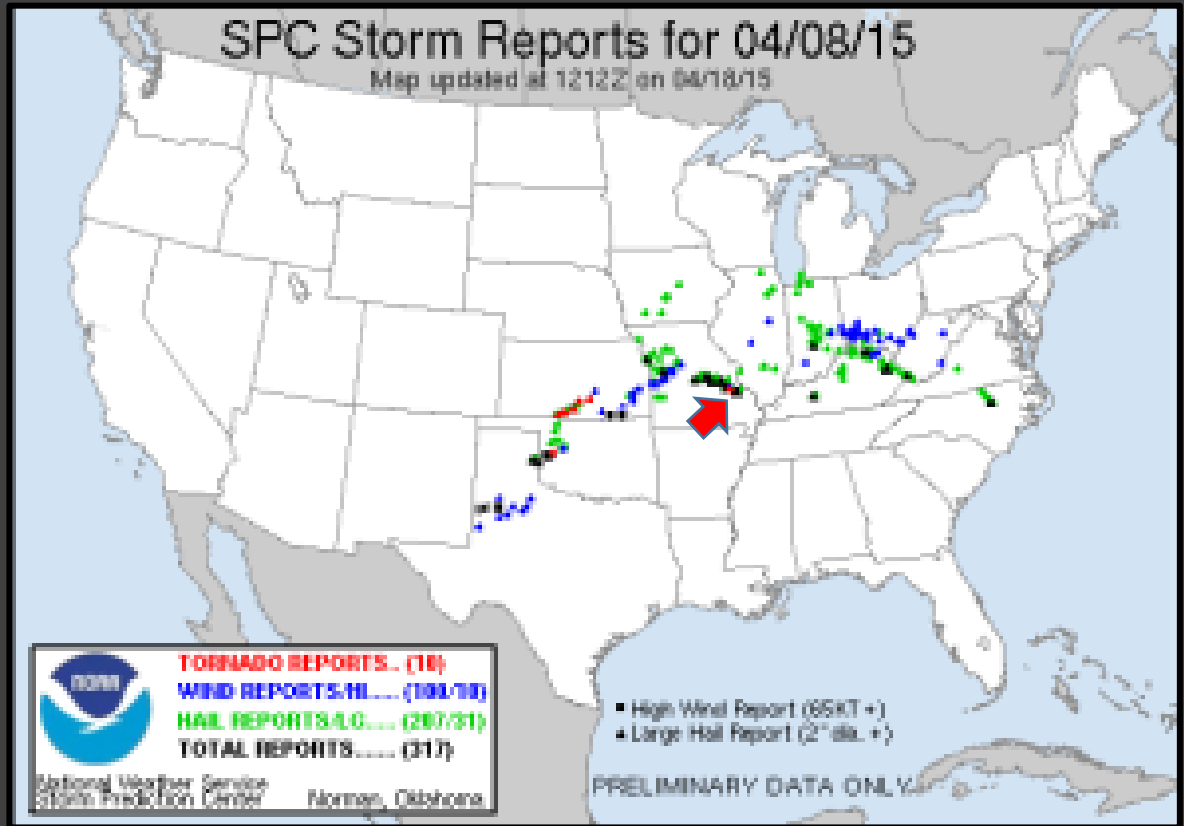
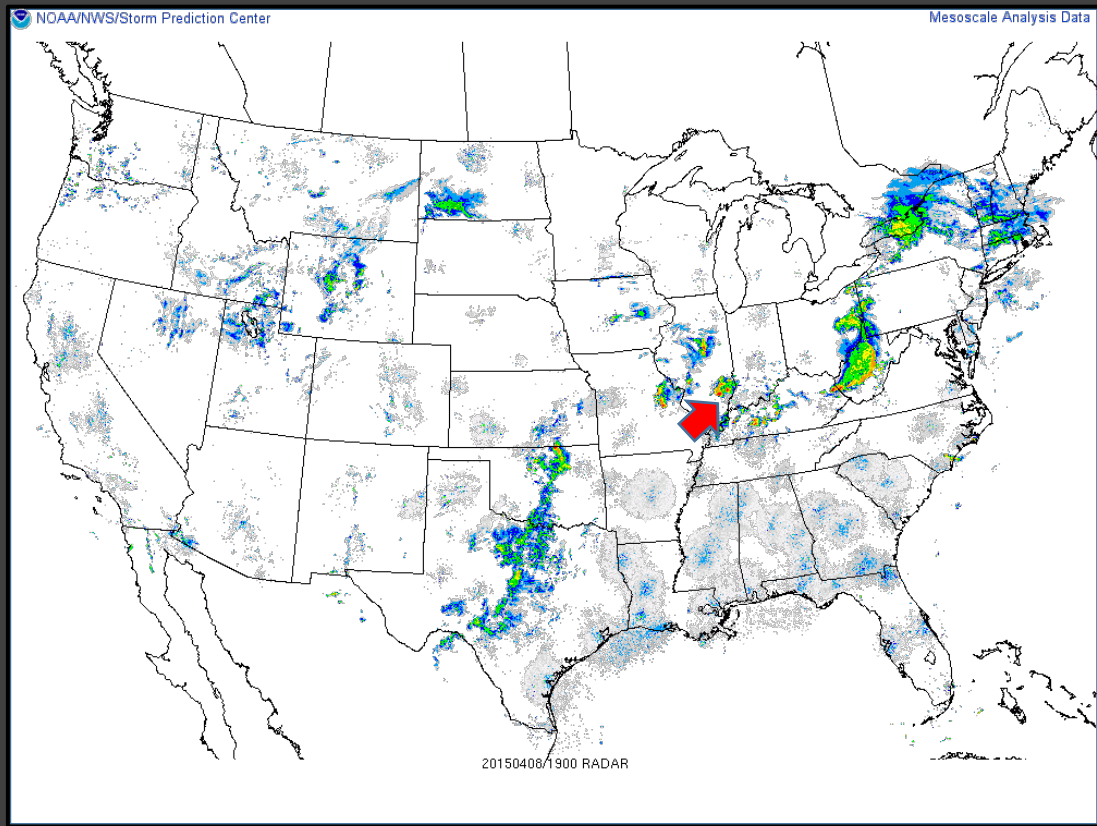


St Louis 100% S- 7km
Indianapolis 100% SW- 8km
Detroit 100%
Louisville 100% S 5-7km
Columbus, OH 100% S- 7 km
Bangor, 100% RW-- 7-10 km
Burlington, VT 60%

2022



2015



April 08, 2015

Some final thoughts:

Be flexible enough to handle embedded weather such as severe thunderstorms or low visibility in snow or fog

Watch weather forecasts in the days ahead of the eclipse to anticipate the direction and extent of the migration

For events, have a Plan B in case of a cloudy day

Movement toward the path from outlying areas may be the most affected by weather because those travellers are more committed to the eclipse

Heavy cloud will likely curtail movement; people will opt out

Border crossings may be busy